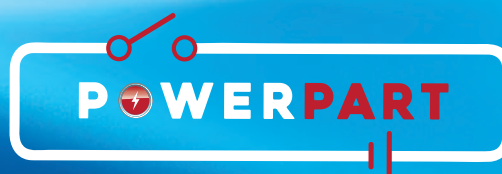


# PRODUCTS

Delivering Excellence Value and Innovation

2022/23



[www.bcagroup.co.uk](http://www.bcagroup.co.uk)

# Welcome to BCA Group



Solar panels are just one of the technologies used to ensure greener efficiencies. Our new Grove Mills facility.

## Over 40 Years in Manufacturing

Founded in 1981, the company specialises in manufacturing electrical systems and electronics for the Leisure and automotive industry.

The company occupies multiple efficient and none polluting sites close to the M62, between Manchester and Leeds, giving easy access to the whole of the UK.

Employing over 150 personnel, the company is continuing to grow with the latest and most advanced production techniques offered to the automotive industry.

This latest technology offers crimp force technology, to ensure quality products at all times.

With a wealth of experience, gained over many years in the industry, our team is highly experienced and can give you the professional advice you need.

## Taking the environment seriously

BCA has continually strived to work in the most efficient ways possible using the latest energy efficient machinery and environmentally friendly working practises and vehicles.

Both factories have installed energy efficient low wattage lighting systems, allowing working areas to automatically illuminate only when required.

Recycling has been rolled out throughout the factory, and is fully compliant with UK Waste Electrical and Electronic Equipment (WEEE) Regulations.

ISO 14001:2015 has now been awarded for our environmental management systems. All our trucks are designed to incorporate the most fuel efficient equipment such as streamlined side guards and roof fairings.



**Wim Batist**  
Chairman



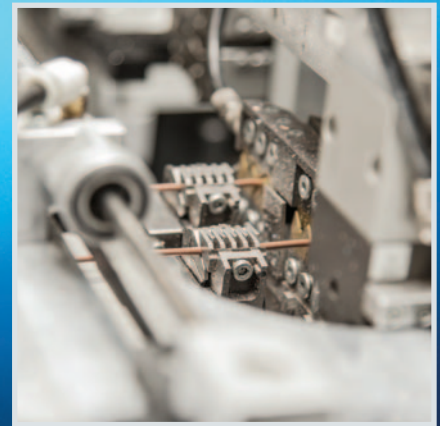
**Adam Slater**  
Managing Director



**Wayne Boyd**  
Sales & Marketing Director



**Dean Hans**  
Technical Sales Director



The Company has five major production areas

- 12 volt Harness.
- 230 volt Harness.
- Plastics.
- Control systems.
- Aftersales.



Our modern warehouse facility allows a greater stock holding, we are able to provide products and services to a wide cross section of industries.

Spacious production layout giving flexibility in production schedules.

Purpose built work stations allows greater efficiency in production.



# Standards

## Standards

BCA Leisure Ltd is a member of the National Caravan Council and BSI

All the products supplied are produced to the relevant BS-EN standards

All products carry a CE mark

Wiring harnesses produced in accordance of EN 1648-1 and EN 1648-2

Battery boxes in compliance to EN 1648-1 EN 1648-2

Power supplies designed and tested to EN 55014 ( 1993 ) ISO 14001 EN 60335-2-29

IEC 1008 RCD's MCB - IEC898  
16 Amp plugs and couplers - IEC309

230V accessories designed and tested to relevant standards



ISO 9001 : 2015



ISO 14001 : 2015

## BCA Contacts

### B.C.A. Leisure Ltd

Premier Way,  
Lowfields Business Park,  
Elland,  
HX5 9HF

Tel: 01422 376977  
Fax: 01422 379296  
Email: [info@bcagroup.co.uk](mailto:info@bcagroup.co.uk)  
[www.bcagroup.co.uk](http://www.bcagroup.co.uk)

### Sales & Marketing Director

Wayne Boyd

### Technical Sales Director

Dean Hans

### Sales orders

Christine Janecki

### Aftersales

Lucy Skellington  
Kyle Pincock

# Index

## WIRING HARNESSSES.

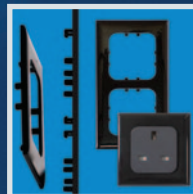
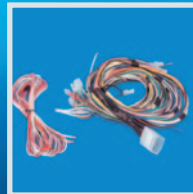
Page 6-7

Wiring Harnesses Diagram

## ELECTRICAL ACCESSORIES.

Page 8-35

Connectors.  
230V Accessories.  
Control Panels  
Power Distribution Unit  
Power Supplies.  
Consumer Units.  
Electrical Accessories.  
Innovative Products.  
TND Range.  
C-Line System.  
  
Switches.  
230V 16A Plug and Couplers.  
12 / 230V Wiring Accessories.



## PLASTIC PRODUCTS.

Page 36-45

Underfloor Battery Box.  
NFDX Battery Box.  
New Flush Door System.  
NBB Battery box and Doors.  
Wet Locker box and Doors.  
NDS Door System.

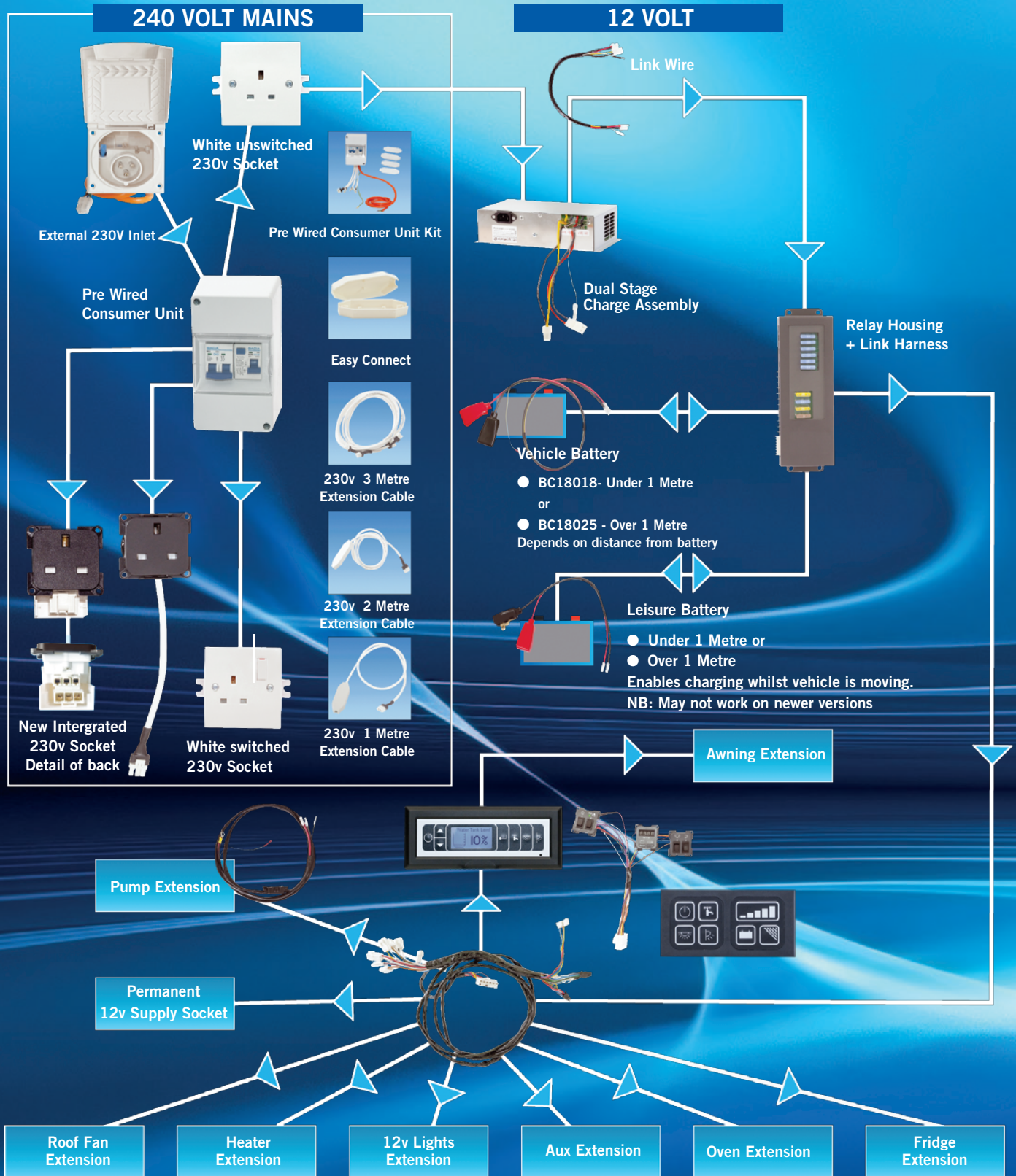


Page 46-47

N and S Connections.  
Water probe.

# Wiring Harnesses

## Caravan, Motorhome and Horsebox Harnesses

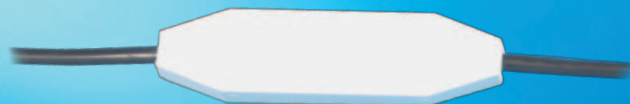




# Connectors



Wiring



Finish

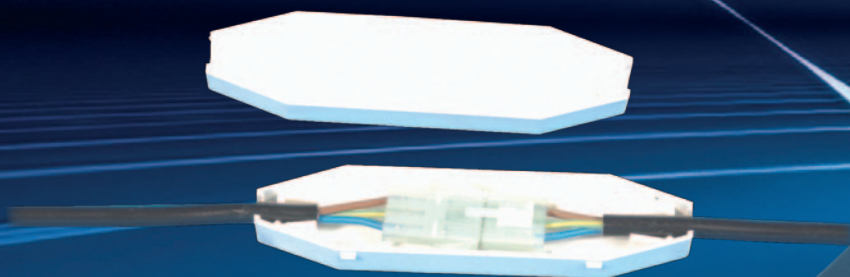
643030 - C-line Easy Connect Light Grey Box



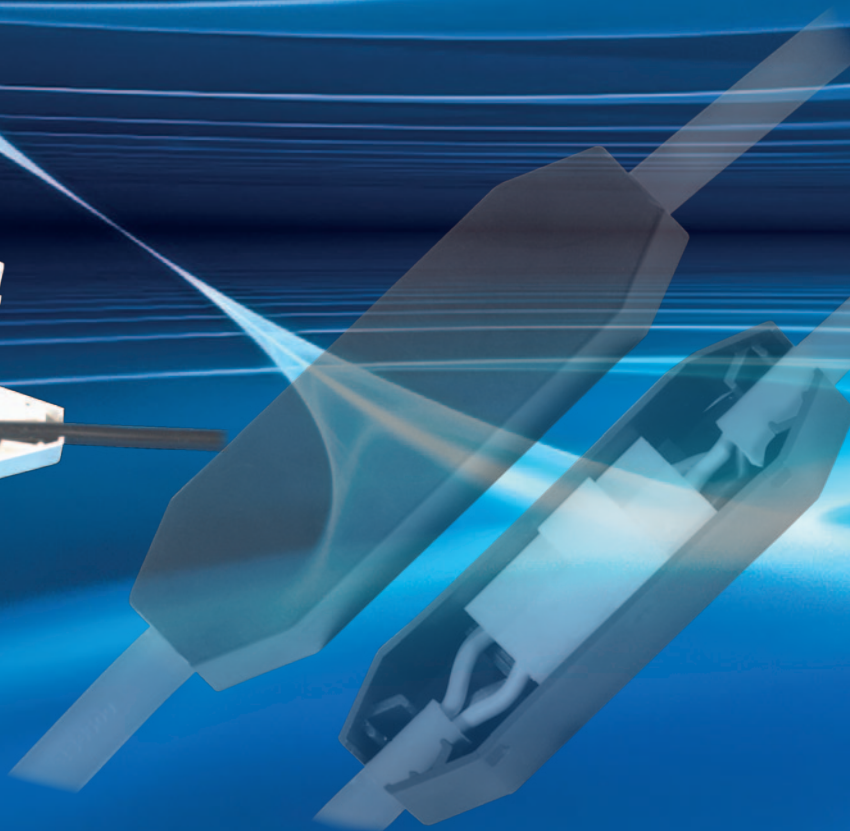
Connection



643050 - C-line Easy Connect Grey Box



Complete



# Control Panels

Here are examples of the extensive range we can supply. Each control panel is tailor manufactured specifically for individual requirements.



C-Line Switch Panels



A choice of surrounds are available.

C-line Control Panels



# Control Panels

## Vegas

Button Control Panel



19BCA00010X - Vegas Control Panel + Water

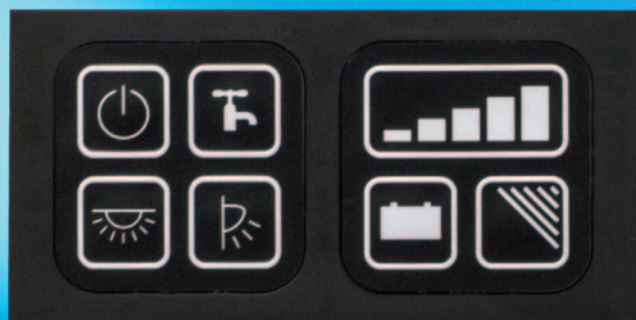
271301 - Vegas Control Panel Voltmeter  
- Battery and Water measurement

19BCA00011X - Vegas Control Panel Buttons

271300 - Master, Pump, Lights, Awning

271303 - Vegas Control Panel Buttons

- Gas Meter Panel



19BCA00021X - Vegas Control Panel Voltmeter

271302 - Vegas Control Battery Meter Panel

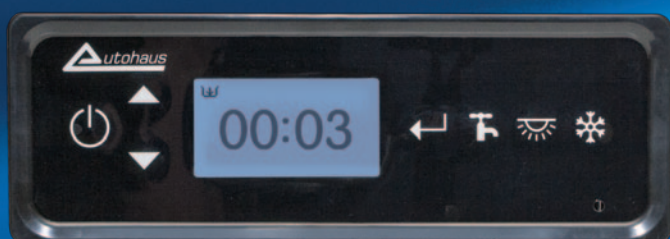


## Seattle

Digital Control Panel

Compatible with  
LIN Bus Electrical system.

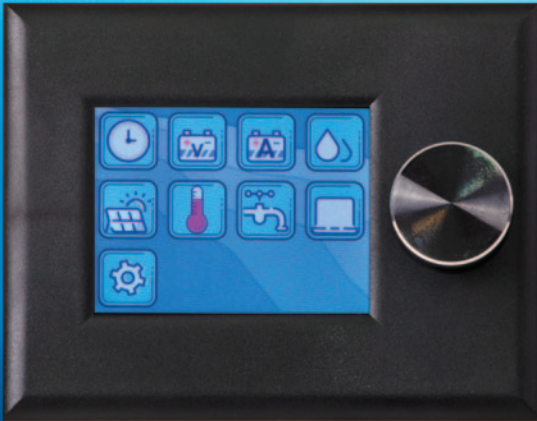
Custom fascias available,  
in a choice of two surround styles.



# Control Panels

## Arizona

Multi Function Control Panel



- 3.1" Capacitive LCD Touch Screen
- Additional Rotary Dial Control
- Intuitive User interface for simple control
- Various measurement readings
- App Compatible (IOS & Android), controlled by Bluetooth or Wifi
- Phantom Tracking Systems compatible



- Digital Control Panel  
Compatible with  
LIN Bus Electrical system
- Control and monitor many RV systems



# Control Panels

## Colorado

Touch Screen Control Panel

- 4.2" Capacitive LCD Touch Screen
- Intuitive User Interface for simple control
- Control and Monitor many RV Systems
- Various Measurement Readings
- LinBus Compatible
- App Compatible (IOS & Android), controlled by Bluetooth or Wifi
- Phantom Tracking Systems compatible



# Montana

Large 7" LCD Touch Screen



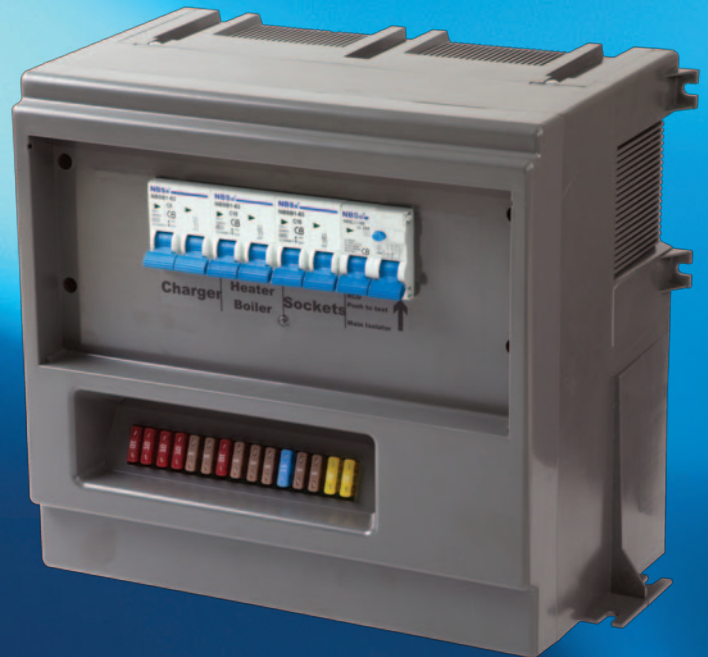
- Control and Monitor many RV Systems
- View multiple levels of electric, water heater, water pumps etc
- LinBus Compatible
- App Compatible (IOS & Android), controlled by Bluetooth or Wifi
- Phantom Tracking Systems compatible



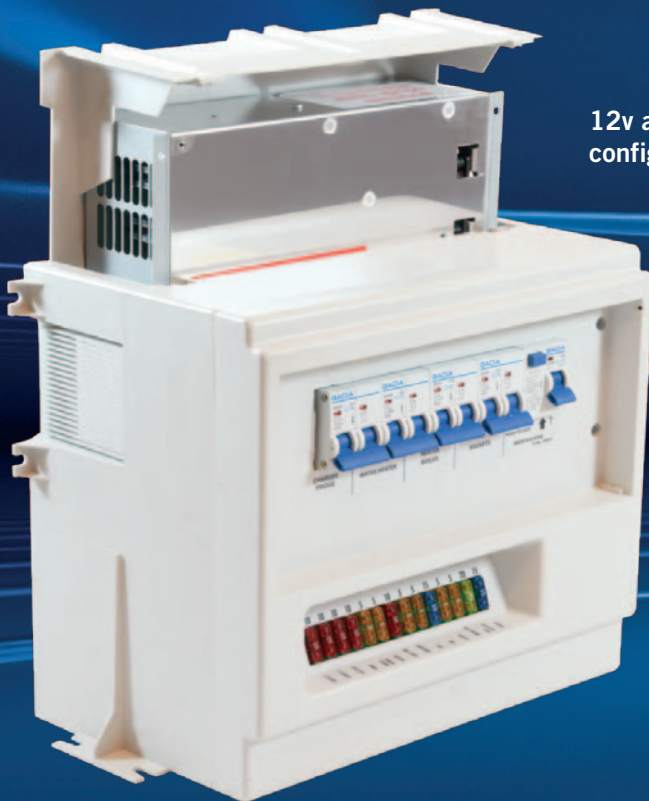
# P.D.U (Power Distribution Unit)



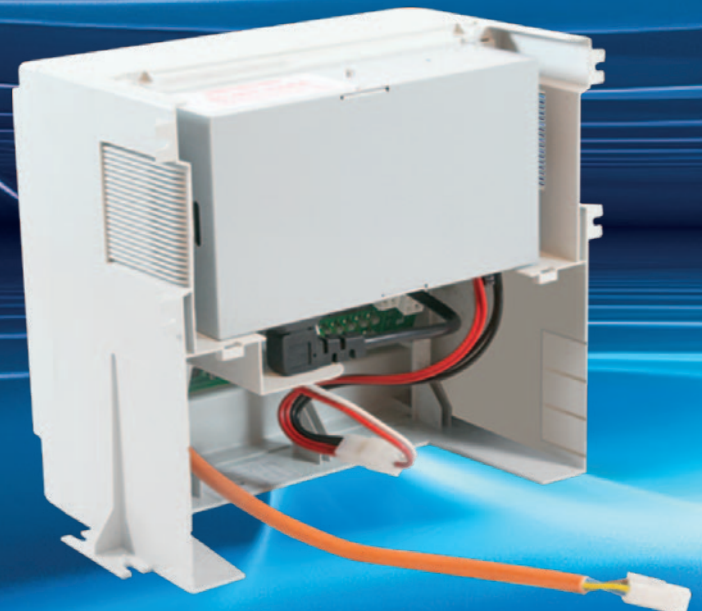
Compact P.D.U



Power Distribution Unit now available in Dark Grey



12v and 230v power distrubution unit with multiple configuration options and power supply options.



Printed Circuit Boards  
For use on BCA Relay Control System

ATRLMM089B -  
Printed Circuit Board



PO151A - 10 Amp Power Supply  
13.8V output, 230V input.

## Power Supplies

10Amp power supply  
13.8 volts output. 230 volts input.  
connections to customer requirements

20Amp power supply  
13.8 volts output. 230volts input.  
connections to customer requirements

All power supplies have negligible  
power drain on battery. Designed to  
operate in all European countries.  
Battery charger automatically  
controlled. Auto cut out on short circuit.  
Auto cut out on overload.



15BCA00012X - 20 Amp Single Stage Power Supply  
13.8V d.c output. 230V input.

Now Available

21BCA00012X- New 30 Amp Single Stage Power Supply  
13.8V d.c output. 230V input.



16BCA0003X - 20 Amp Dual Stage Power Supply  
with separete 8A battery charger.  
13.0V d.c output. 14.2V - 13.8V d.c battery charger.

# Consumer Units



H:181mm W:110mm D:94mm

## P103X - Mains Consumer Unit Standard

This unit gives you maximum security with mains electricity in your caravan.



H:182mm W:165mm D:91mm

## P104X - Deluxe Consumer Unit Standard

Based on our experience the consumer unit has all the facilities of the standard unit but is internally wired for ease of fitting. Complete with 6Amp / 10 Amp or 16 Amp MCB.



2506A - 6 Amp double pole MCB  
2510GA - 10 Amp double pole MCB  
2515GA - 16 Amp double pole MCB



2530A - 25 Amp earth leakage breaker

# Electrical Accessories



## Mains Extension Leads

For connecting your caravan to electricity on site. 25 metres



14BCA00091X - 25 Metre Lead



20BCA00003X - 25 Metre Lead with 90° Angle



841010 - Brass Battery Clamps



841010C - Battery Clamp Covers

P0919 - Prewired Brass Battery Clamps

P0913 - White Junction Box 20 Amp



920030 - 13 Amp Socket



920020 - 13 Amp Plug



999915A - Pull Switch



# Electrical Sockets



920040 -  
13 Amp Socket Switched



820050 -  
13 Amp Socket with lugs



580005W -  
13 Amp Socket Un-Switched



380037W - Single back box



LE199 - Double 13 Amp Socket Switched



LE195 - Double back box

# Innovative Products

## NEW for 2022

Every year we hope to introduce new and innovative products. These include quality improvements or the inclusion of new components, materials or desirable functions which provide enhanced features and benefits into an existing product.



**277250 Surface mounted wireless fast charger.**  
Compatible with all Qi standard devices.  
10 Watt.



**277260 Pop up wireless charger**  
Compatible with all Qi-Certified standard devices.  
Input 12v 2.5 Amp.  
Output 10 Watt  
2 x 1.0 Amp USB Ports.

# Inlets and Outlets

## Element Inlet



8403060 -  
Utility Outlet A Element Line White



4601557W -  
Cee Inlet Silver Flush Mount



4601556B -  
Cee Inlet White Flush Mount

## Utility Box

P0141 -230v Inlet Box



## TND Range



**14BCA00126X -**  
230 Volt Mains  
Inlet Box.



TND Box fitted with  
13 Amp socket and  
Satellite connection.

**15BCA00063X -**  
TND Grey External  
13 Amp Satellite Box  
and Connection

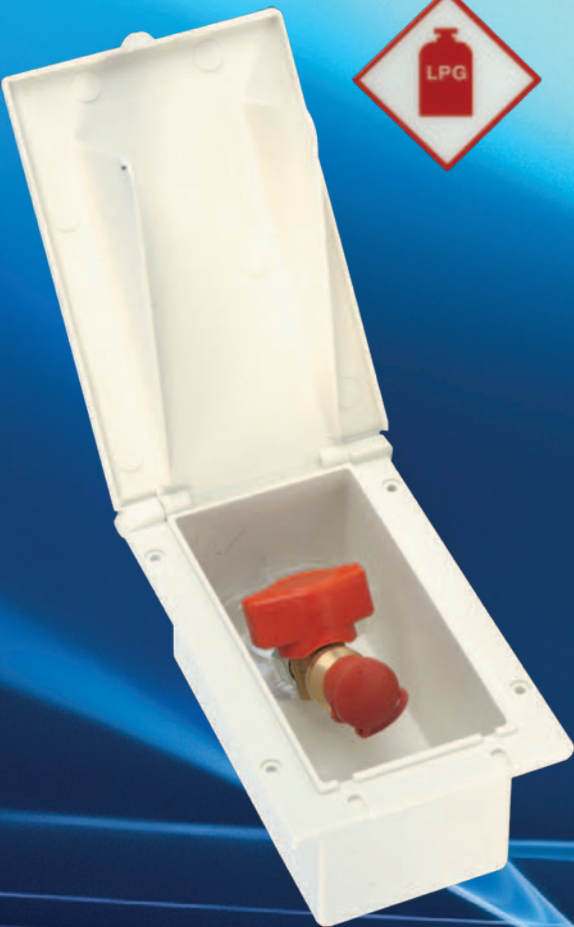


**15BCA00061X -**  
230 Volt External Outlet  
including Motor Mover  
Isolator Switch.



**14BCA00063X -**  
TND White External  
13 Amp Satellite Box  
and Connection

TND Gas Outlet Box



241000GX - TND Gas Outlet Box Grey



241000X - TND Gas Outlet Box White



TND Box including Motor Mover Isolator Switch.



TND external 13 Amp Socket Box. Available in White, Grey and Magnolia.



15BCA00058X - TND 12 Volt 200 Amp Motor Mover Box



**PO114 - 230 Volt Rectangular Flush Fitting Inlet White**

**PO114C - 230 Volt Rectangular Flush Fitting Inlet Magnolia**

**Flush Fitting Outlet**  
Available in White and Magnolia  
13 Amp socket fitted in a flush fitting box for bringing electricity to the exterior of the caravan.



**840017 - Flush Fitting Mains Inlet White**

**840019 - Flush Fitting Mains Inlet Black**





# C-Line System



**270216B**  
12 Volt TV / Sat Socket



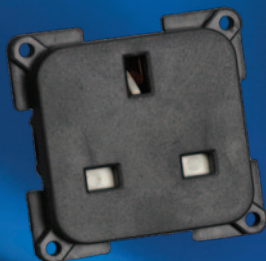
**270212B**  
12 Volt and TV Socket



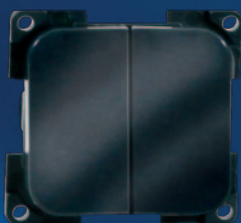
**277155**  
TV and Satellite Socket



**277157**  
Double Sat Socket



**271120**  
13 Amp Socket



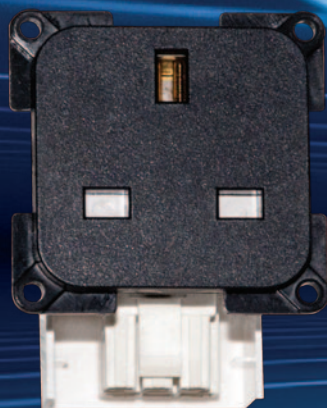
**271717**  
Double Switch



**271D450R**  
Circular Back Box



**271711 Two Way**  
**271712 Momentary**  
Single Switch



**271100** C - Line integrated 230 Volt Socket



**820096**  
Black Flap / Surround



**380095BLKC**  
Surround C-Line  
adaptor plate



\*Most items available in dark grey or black



**15BCA00014X**  
12 Volt Meter



**16BCA02X**  
5 Volt 1 Amp  
5 Volt 2.1 Amp  
USB Connector



**271051G / 271051B**  
Back Box



**277190**  
Satellite Socket



**277201** Twin USB  
1 x 2.1 Amp  
1 x 1.0 Amp



**1 Way**  
Surround Surface  
Mount only

### Angled Socket

To improve mounting on worktop or wall fixing. Can be fitted either vertical or horizontal. Available in Bronze or Grey.



**2730022**  
10 Amp fused Spur or  
**273012C**  
5 Amp fused Spur

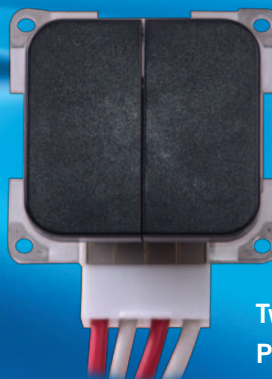


**271720** Touch dimmer  
12v 3.5 Amp capacity

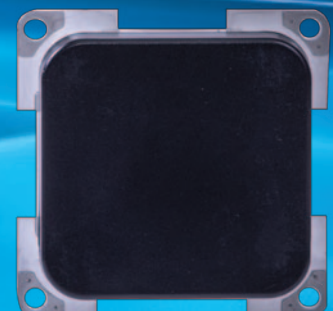
### New integrated switches



Simple Plug n Play



Two Gang One Way  
Plug n Play Switch



One Gang Two Way  
Plug n Play Switch



# C-Line System CSM

## C-Line System CSM Grey



901201 - Grey CSM Range  
1 Way Surround



901202 - Grey CSM Range  
2 Way Surround



901203 - Grey CSM Range  
3 Way Surround

## C-Line System CSM Black



901211 - Black CSM Range  
1 Way Surround



901212 - Black CSM Range  
2 Way Surround



901213 - Black CSM Range  
3 Way Surround

## C-Line System CSM Silver



901221 - Silver CSM Range  
1 Way Surround



901222 - Silver CSM Range  
2 Way Surround



901223 - Silver CSM Range  
3 Way Surround



# C-Line System CSG

## C-Line System CSG Chrome



901331 - CSG Range  
1 Way Chrome Surround



901332 - CSG Range  
2 Way Chrome Surround



901333 - CSG Range  
3 Way Chrome Surround

## C-Line System CSG Gloss Black



901311 - CSG Range  
1 Way Gloss Black Surround



901312 - CSG Range  
2 Way Gloss Black Surround



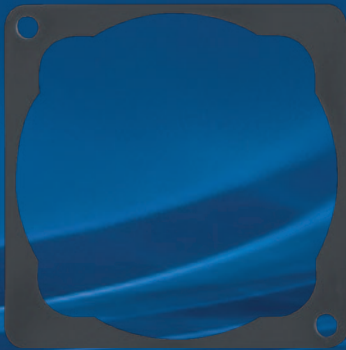
901313 - CSG Range  
3 Way Gloss Black Surround

## C-Line System Spacer CX



820095 - C line Spacer Tool

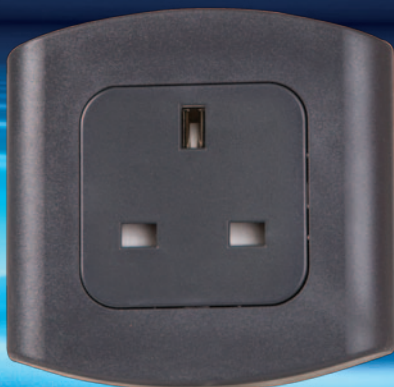
820091A - 1 Way Spacer CX



820092A -  
2 Way Spacer CX



820093A -  
3 Way Spacer CX



820052 - CX Range  
1 Way Surround



820055 - CX Range  
2 Way Surround



820060 - CX Range  
3 Way Surround

## C-Line System CX



# C-Line System CG

## C-Line System CG High Gloss Black



901030 -  
3 Way High Gloss Black Surround



901020 -  
2 Way High Gloss Black Surround



901010 -  
1 Way High Gloss Black Surround

## C-Line System CG High Gloss Chrome

901031 -  
3 Way High Gloss Chrome Surround



901021 -  
2 Way High Gloss  
Chrome Surround



## C-Line System CG Matt Black



901015 -  
1 Way Matt Black Surround



901025 -  
2 Way Matt Black Surround



901035 -  
3 Way Matt Black Surround



901011 -  
1 Way High Gloss Chrome Surround



# C-Line System CT

## C-Line System CT Silver



901090 - 3 Way Grey Mounting Plate

901100 - 3 Way Silver Surround CT Range Silver



901070 - 2 Way Grey Mounting Plate  
901080 - 2 Way Silver Surround CT Range Silver



901050 - 1 Way Grey Mounting Plate  
901060 - 1 Way Silver Surround CT Range Silver

## C-Line System CT High Gloss Black



901062 -  
1 Way High Gloss Black Surround



901082 -  
2 Way High Gloss Black Surround



901102 -  
3 Way High Gloss Black Surround

# C-Line System LP

New



## C-Line Low Profile

Our modern Low Profile C-Line plate design available in three finishes and two sizes, single and double.

Available in

- Gloss Black Finish
- Matt Black Finish
- Matt Grey Finish



- Ultra slim
- 3.5mm profile
- Reliable clip-in system

### Gloss Black Finish



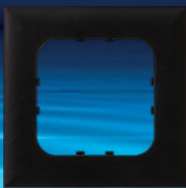
901480 -  
1 Way Gloss Black  
Surround



901485 -  
2 Way Gloss Black  
Surround



### Matt Black Finish



901440 -  
1 Way Matt Black  
Surround



901445 -  
2 Way Matt Black  
Surround



901400-  
1 Way Matt Grey  
Flush Socket



901420 -  
1 Way Matt Grey  
Surround

901425 -  
2 Way Matt Grey  
Surround

901405 -  
2 Way Matt Grey Flush Socket  
(not shown)



# Switches

# 12V / 230V Wiring



500012 - Mains 240V  
Illuminated on/off switch



500201 - Small Black  
on/off rocker switch



925400 - Black circular  
on/off rocker switch



925410 - Black circular centre off  
rocker switch



925440 - Black circular centre off  
rocker switch Neon



500048 - Large grey  
centre off rocker switch



900500 -  
Cable Cover Beige  
Flame Retardent



900506 -  
Cable Cover Grey  
Flame Retardent



900511 -  
Cable Cover Black  
Flame Retardent



400525 -  
Skeleton Plug  
HH13P



400526 -  
Skeleton Plug Solderless  
HH13P



400580 -  
F Rec to Belling Male



400590 -  
F Female to Belling Female



400551 -  
Coax Splitter Female



400599 -  
F Type Connector



4400570 -  
F Adaptor to Panel Mount



500023 - Volt Meter



500214 - Volt Meter



500213 - Water / Volt Meter

# Accessories



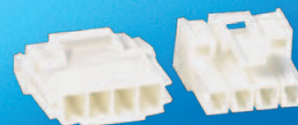
VL12 -  
12 Way Connector



VL08 -  
8 Way Connector



VL4S -  
4 Way Connector



VL4L -  
4 Way Connector



VL02 -  
2 Way Connector



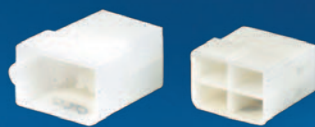
VF11 -  
11 Way Connector



VF08 -  
8 Way Connector



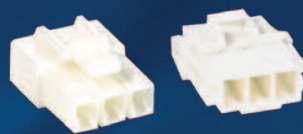
VF06 -  
6 Way Connector



VF04 -  
4 Way Connector



VF025 -  
2 Way Connector



VL03 -  
3 Way Connector



VL06 -  
6 Way Connector



VF01 -  
1 Way Connector



VF02T -  
2 Way Connector



VC03 -  
3 Way Connector



VR03 -  
3 Way Connector

## Waterproof Connectors



410660 -  
14 Pin Connector



949301 -  
3 Way Yokon



949201 -  
2 Way Yokon



949310 -  
4 Way Superseal



410068 -  
3 Way Superseal



410615 -  
2 Way Superseal

# Underfloor Battery Box



659300 -  
Battery Box Black



Glass fibre reinforced lid for strength and lightness.

659305 -  
Battery Box Lid Black



Cover with lid handle open for inspection.

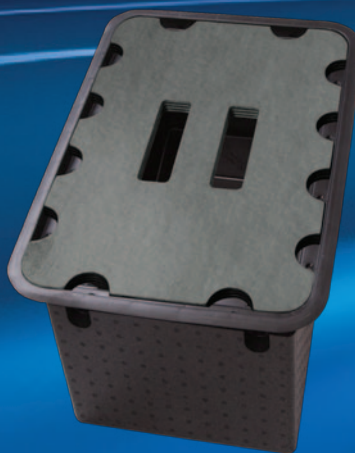


Cover with lid handle closed.

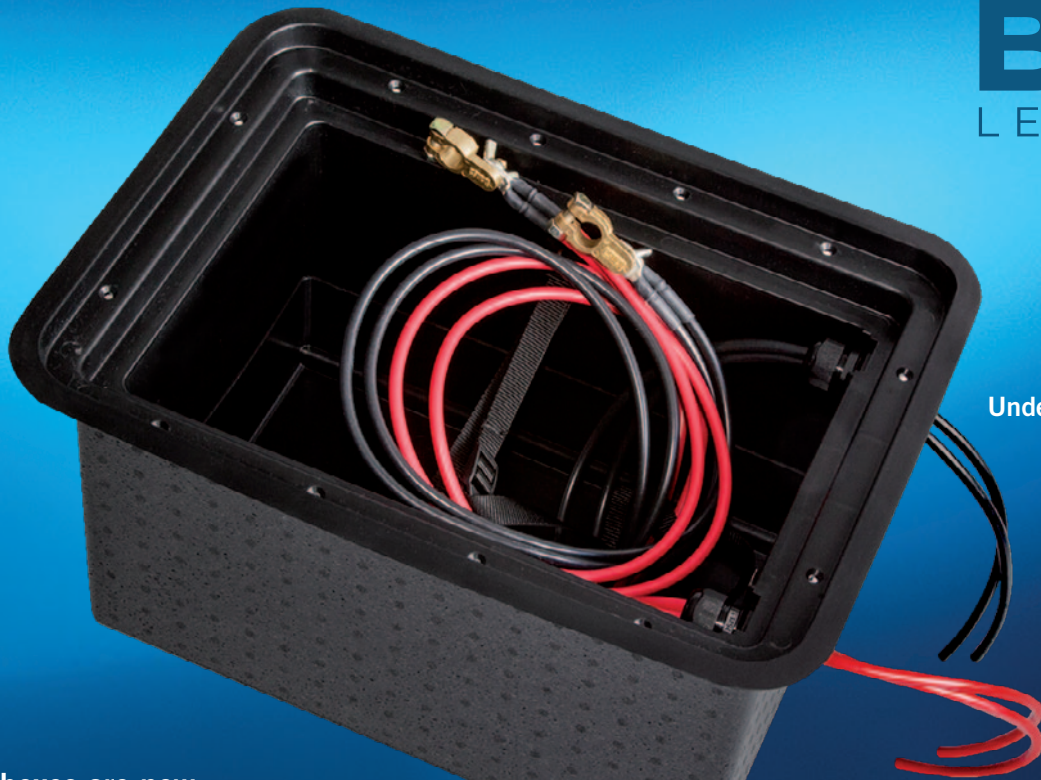
659306 -  
Battery Box Lid Mocha



Jigs available for fitting.



659301 -  
Battery Box Mocha



Underfloor Battery Box

Battery boxes are now available in three colours, Black, Mocha and Dark Grey.

Double cable set available for motor mover ready option.

Made to Order: Vehicle Specific Underfloor Battery Harness including Motor Mover Isolator Switch



Underfloor battery harness including motor mover isolator switch.

New Dark Grey Battery Box



659302 - Battery Box Dark Grey



Note: When used as a battery box a separate mains inlet must be fitted.

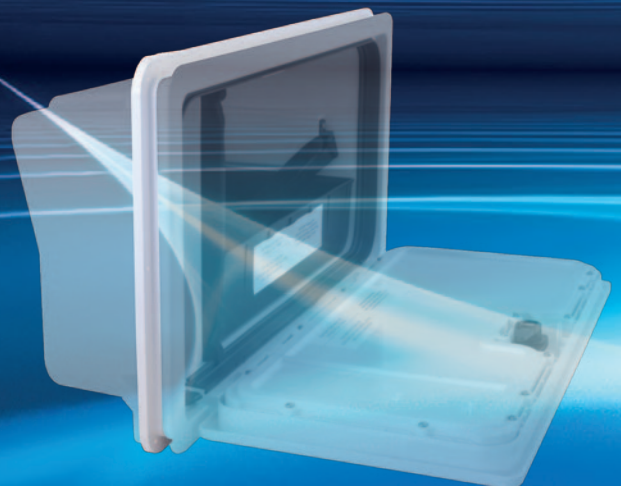
# NFDX Battery Box System



Battery Box available including  
Motor Mover Isolator Switch  
and Cable set

650036B - Finishing Rim White  
Alternative finishing rim  
for interior

Choice of clamping frame using  
4 screw points to allow various  
wall thickness.



UV stabilised ABS ideal for bonding applications.



No external screw holes.  
Eliminates potential water ingress.

# Flush Door System



## Flush Battery Box Locker Door

No screws into bodywork to help prevent water ingress.

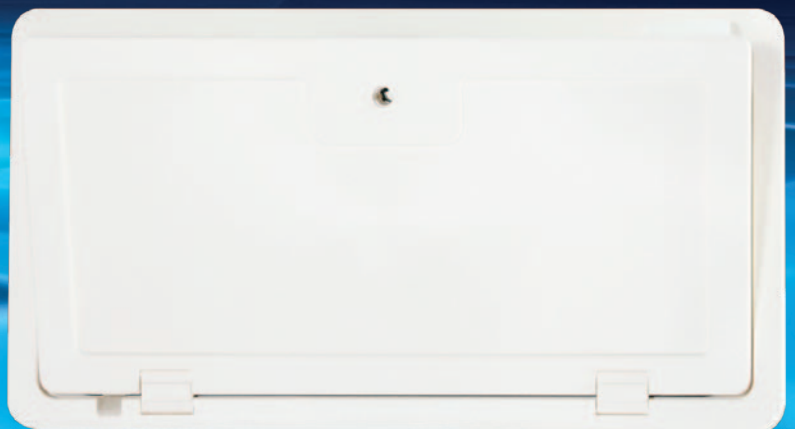
Available in  
White, Magnolia, Light Grey, Dark Grey.



Locker Door and Frame

## New Mini Flush Door

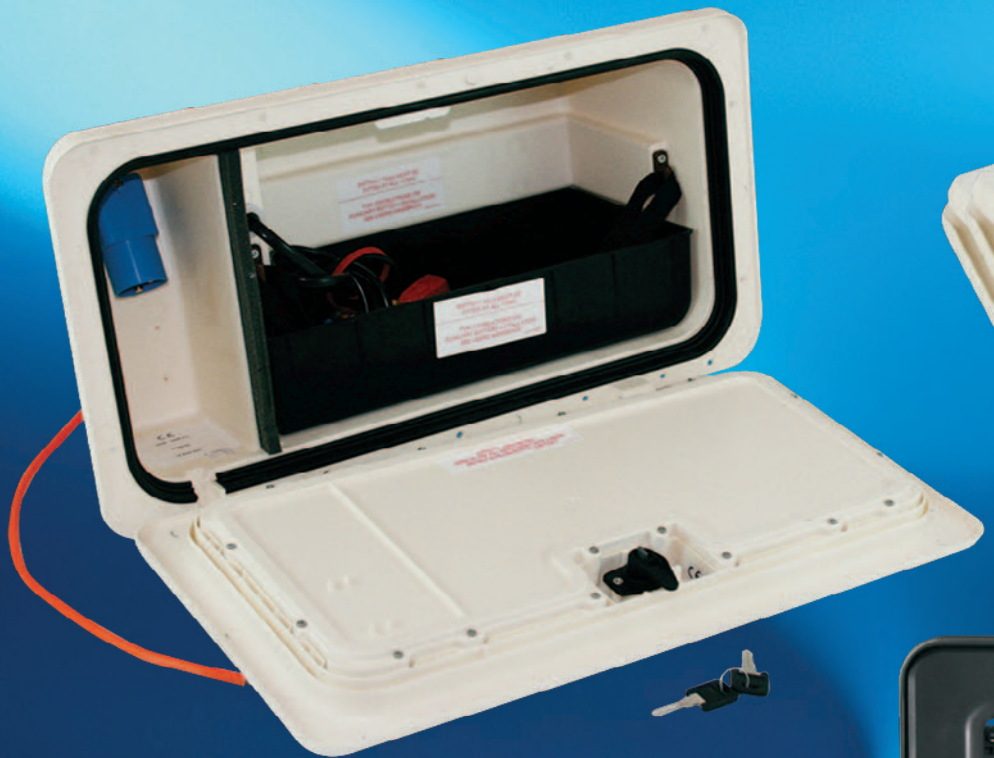
Complete with clamp system.  
Aperture is large enough for a toilet cassette  
or a 7 Kg gas bottle.



# NBB Battery Boxes / Doors

## P0570 - White Box and Door

Battery Box/Locker Door  
Physical size 595mm x 315mm\*  
Aperture size 557mm x 278mm\*  
White Battery Box / Locker box Door.  
Battery Box Door.  
Only available to replace existing  
fitted battery box doors.

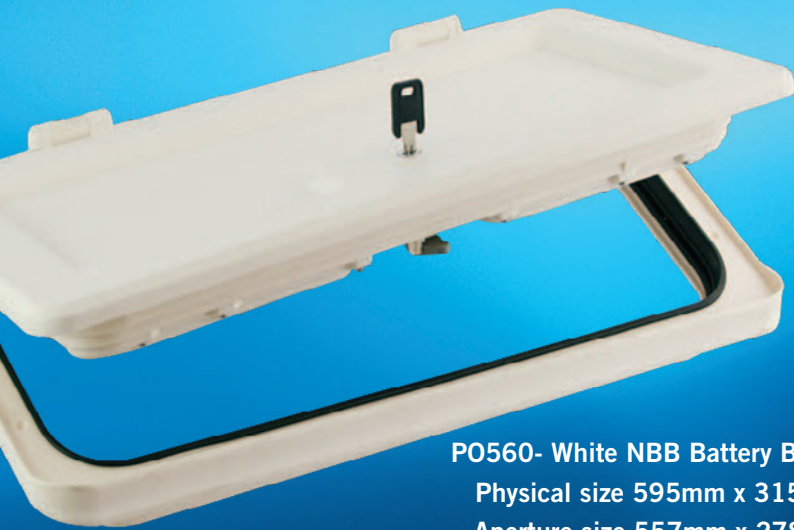


NBB New Battery Box & Door System  
White Battery Box & Door  
Complete with Door and Infill Piece  
Aperture size 557mm x 278mm\*.



P01801X - Dark Grey NBB Battery Box Door  
Physical size 595mm x 315mm\* Aperture size 557mm x 278mm\*  
NBBS Battery Box Door with Infill Piece  
Colour - White.





**P0560- White NBB Battery Box Door**  
Physical size 595mm x 315mm\*  
Aperture size 557mm x 278mm\*  
NBBS Battery Box Door with Infill Piece



**420055 - NDF NBBS Door Seal**



**12PV10162X - Dark Grey Door**



**P0262 - West Alloy Snake cut lock kit**



**420004 - Partition Seal**



**12PV10071X - Light Grey Door**



**653210 - NBB Battery Tray**



**653210 - NBB Battery box tray**

# Locker / Double Battery Box



16BA04X - Fawo Door Close

External dimensions for box  
570mm Wide  
400mm Depth  
295mm Height

Internal tray dimensions  
175mm Wide  
360mm Depth  
85mm Height



19BCA00071X - Double Battery Box

Locker / Double Battery Box can be used as locker or double battery housing. Capable of accepting 2 X 110 amp leisure batteries.

Note: When used as battery box a separate mains inlet must be fitted.



# NDS Door System



16ELEQE048X



12ADR0008X



P0790 - White Door



420035 - Battery strap and strap holder



P0362 - West Alloy Snake cut lock kit



420046 - NDS Replacement Door Seal 200cm (fits all sizes)

990003 - West Alloy Lock with 2 Keys



990001 - West Alloy Lock fitting only  
Battery box door lock



420017 - Replacement Barrel with 2 Keys



653335A - Magnolia Hinge pins  
653336A - White Hinge pins

# N Plug Harness

**N Plug Harness**  
This is a complete bespoke  
plug and play harness.



840073 - Black 13 Pin Plug



840027 - 7N Plug



7840021 - S Plug



RI70S -  
Black 13 Pin Socket



RI505 - 7N Socket



RI500 - 7S Socket

# Water Probe

Used in conjunction with various BCA control panels.



ES2040 - Water Probe  
Uses air pressure  
for reliable accuracy.



Vegas Control Panel

## The BCA Group



Pennine Leisure Supplies has rebranded its own products ranges. We are certainly the UK caravan trade's most respected supplier since 1984. Our specialist converter catalogue is now available.

### Pennine Leisure Converter Catalogue



### Rebranding BCA Leisure and logo

We have now refreshed our BCA Leisure and Powerpart logos to reflect the character and consumer perceptions of our products. This update is to strengthen the company's presence and image as we move forward.





**B.C.A. Leisure Ltd**

**Premier Way, Lowfields Business Park, Elland, HX5 9HF**

**Tel: 01422 376977 Fax: 01422 379296**

**Email: [info@bcagroup.co.uk](mailto:info@bcagroup.co.uk)**

**[www.bcagroup.co.uk](http://www.bcagroup.co.uk)**